



Pratibaddha 2 Introduction

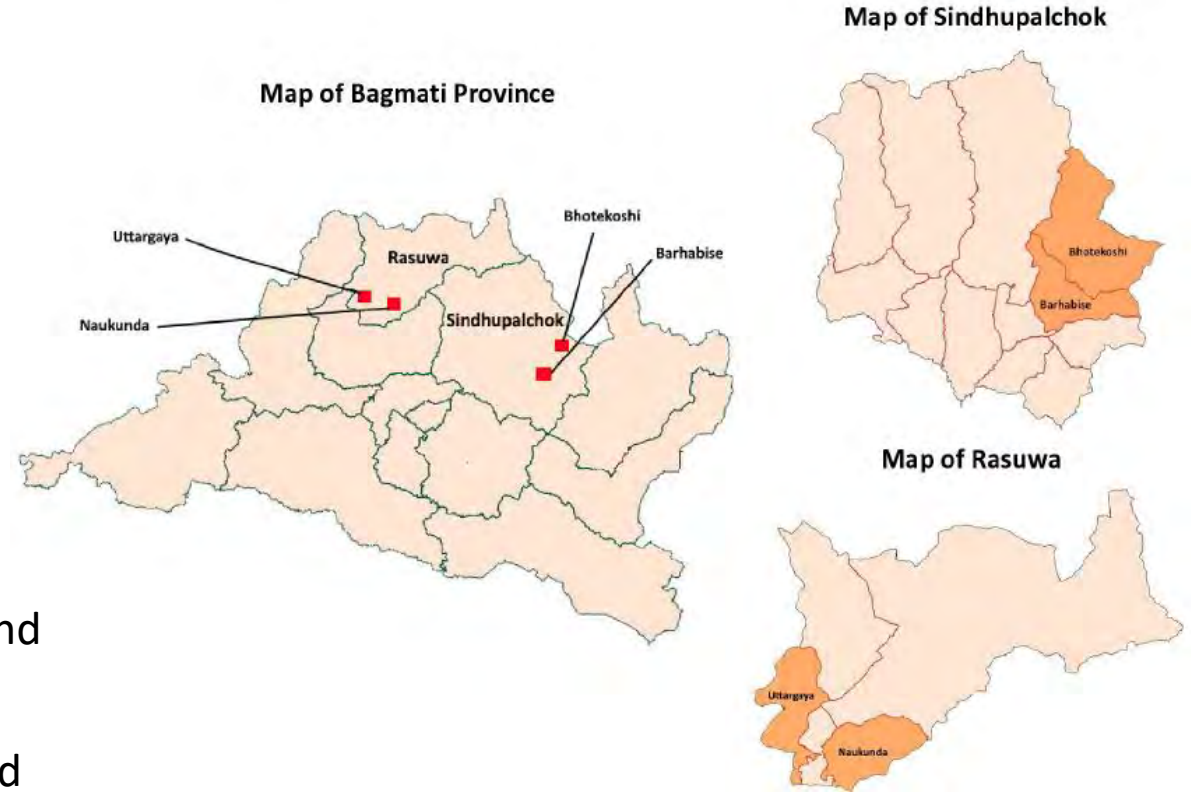
Bagmati Province



Introduction

Based on the achievements, learnings and identified gaps from

- ECHO funded **Pratibaddha I** implemented by PIN in 2020-22 in partnership with CSRC, SWN, Durham University (DU), Northumbria University (NU) and NSET
- FCDO-funded **DSII project** implemented by PIN and CSRC and SWN until 2021.



Project Objectives

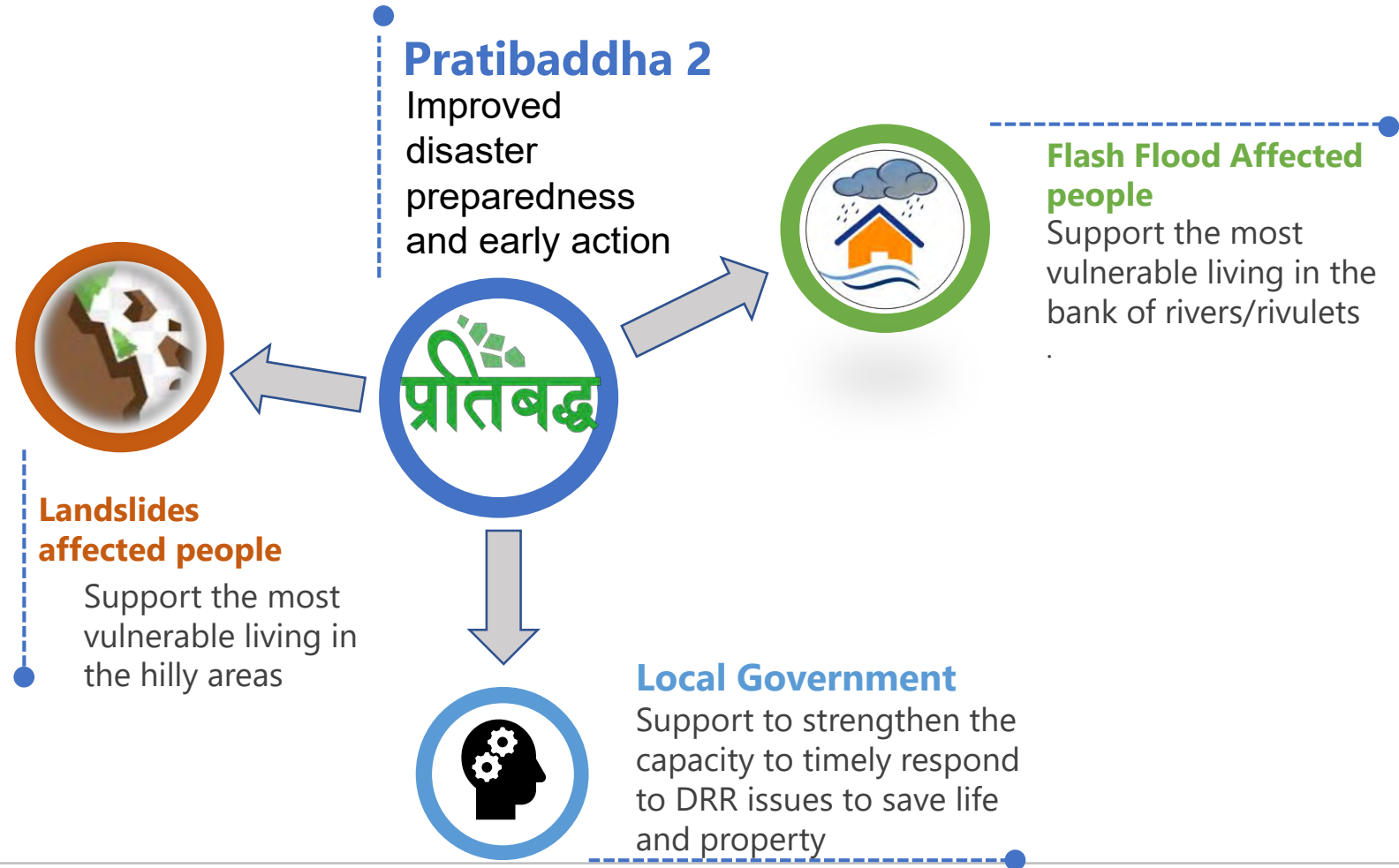
This Project will engage **municipality representatives, communities at risk** and **key stakeholders** across three tiers of the government to commit and work together to

implement nature-based solutions aimed at disaster mitigation (Result 1),

localize forecasting, plan and implement early action (Result 2),

leverage the governmental Social Protection (SP) programmes before and during the times of crisis (Result 3)

Targeted Beneficiaries



Achievements from Pratibaddha 1 and Way Forward for Pratibaddha 2



Risk Communication

Government Priority Area: Risk Understanding of Disaster and Climate Change

- ✓ Risk Communication: Disaster-related public awareness material

- Trainings for Engineers and other technical representatives
- We were able to reach out almost 19,000 people directly through

Community Awareness Program

Orientation program using IEC material

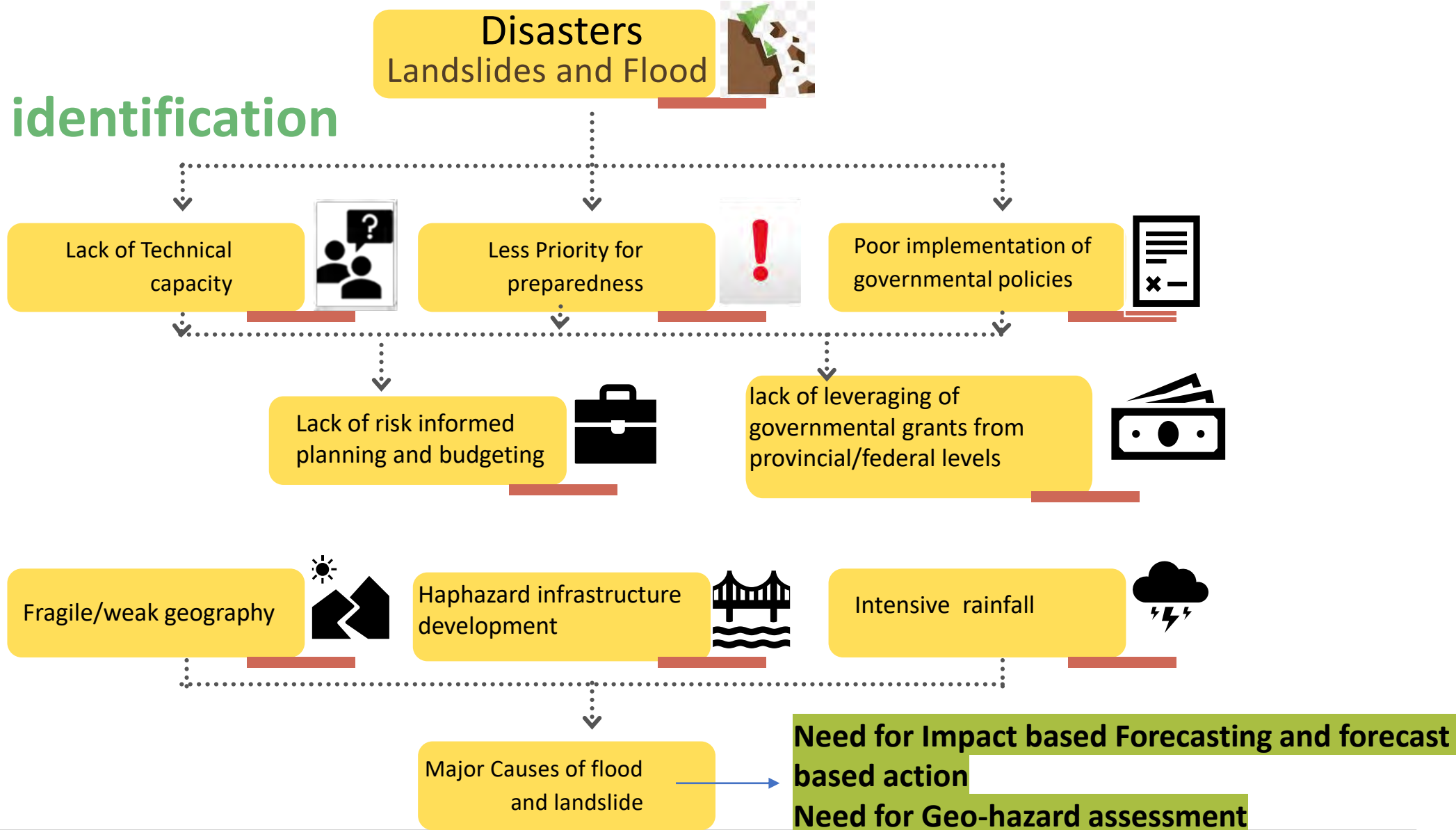
Landslide Demonstration Model (LDEM)

Calendars with message on community level landslide risk reduction and preparedness

Participatory 3D Model (P3DM)



Problem identification



Government area of priorities

Pratibaddha 1 worked in the following priorities area and Pratibaddha 2 will continue contributing in the same field.

Strengthening Recovery, Rehabilitation and Reconstruction

- ✓ Orientation and coordination programs for private housing grant distribution procedures

Research, training and capacity building.

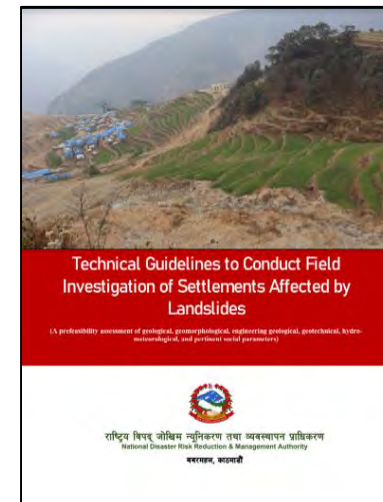
- ✓ On-site geological study of disaster affected risky areas
- ✓ DRR related training for vulnerable people

Strengthening the disaster risk management system at the federal, provincial and local levels

- ✓ Service from Geologist / Civil Engineer / Hydrologist/ Forest engineer / Management Information Systems Experts
- ✓ Organize meetings to facilitate coordination between partner agencies/ organizations.
- ✓ Activities related to planning, program formulation, and report publication

Geo-hazard assessment

- Technical Guidelines to Conduct Field Investigation of Settlements Affected by Landslide formulated by Pratibaddha 1
- Endorsement of Technical Guidelines from NDRRMA
- Geo-hazard assessment of 147 settlements at risk of landslide and flash flood



	No. of settlements	No. of HHs
CAT I	22	129
CAT II	114	3027
CAT III	11	124



Facilitation for CAT III HHs

Endorsed by NDRRMA- **Monsoon Induced Disaster Affected Private House Reconstruction and Relocation Grant Procedure 2077**

Facilitated the agreement process

1. Series of consultation meetings
2. Exposure visits
3. Provided HR Support to DAO



-During the exposure visits few critical sites were confirmed to be CAT III (listed in CAT 3 by geo-hazard assessment)
for example: **Tangsar of Barhabise Municipality**

EQ affected HHs
Land ownership certificate received by
-20 HHs displaced by EQ
-21 Landless HHs

Data verification and approval by DAO for CAT III
-1384 HHs verified
-440 HHs approved

Temporary shelter Grant
-255 HHs received the 1st Installment
-107 received 2nd installment

Success Story- CAT III



Chameli is one of many living in high-risk area, Tangsar-7, Barhabise who require relocation to safer land.

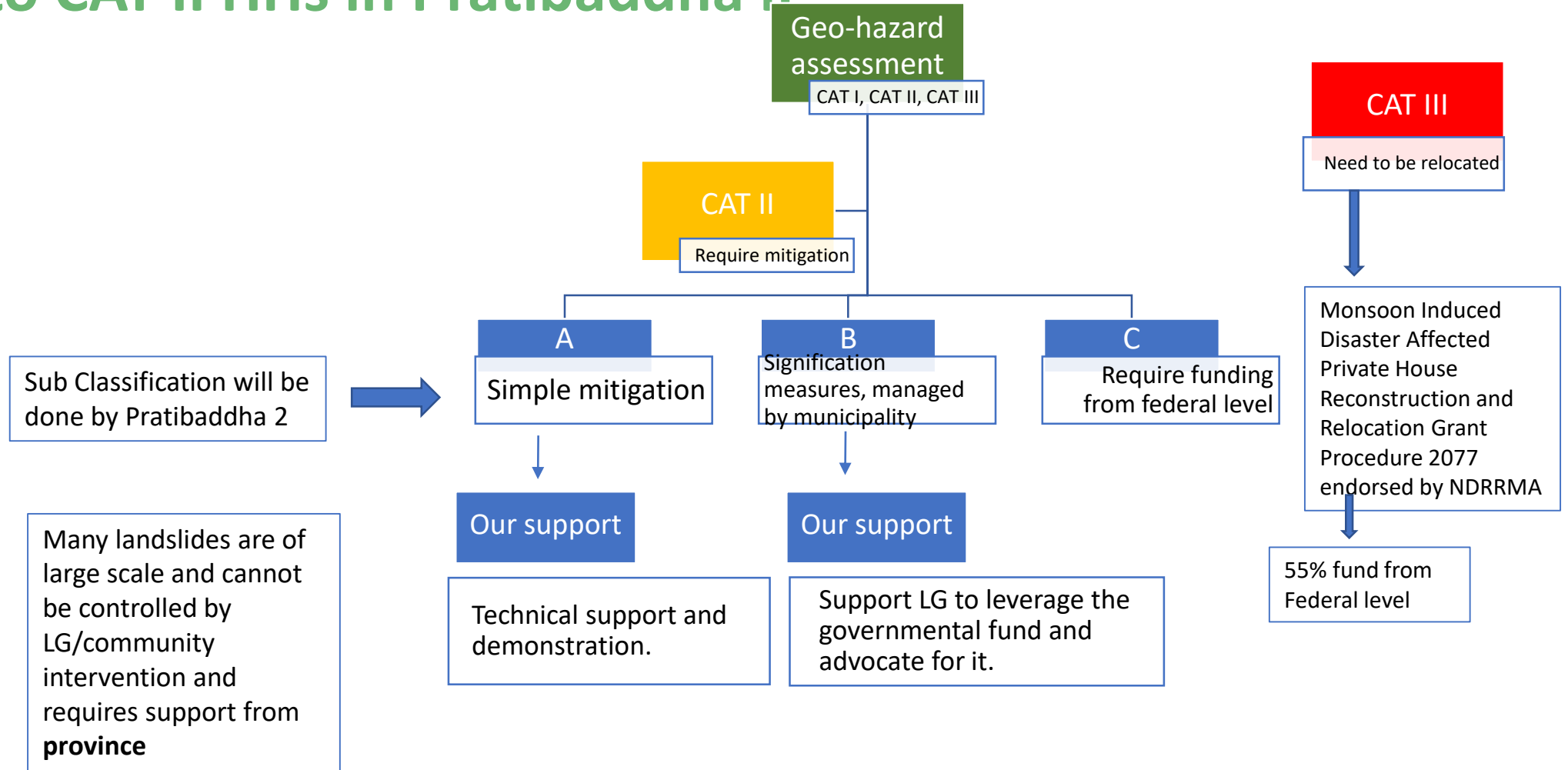
The geologist has visited our place, and after the assessment, they said that the area is at risk and we need to relocate.



The project advocated for the relocation and made visits from concerned authorities to observe their situation. Now, all the households at risk are approved for relocation by the government and are eligible to receive the land/housing grant. The safer location for their relocation has also been assessed by the geologist

<https://nepal.peopleinneed.net/en/role-of-women-in-disaster-risk-reduction-drr-and-climate-change-8600gp>

Support to CAT II HHs in Pratibaddha II



Province- Ministry of Internal Affairs and Law (MoIAL)

- **Focal ministry** of DRR in the province
- Willing to collaborate with the relevant stakeholder like NGO/INGOs
- Planning to prepare multi-hazard risk mapping.

Gaps and Limitations:

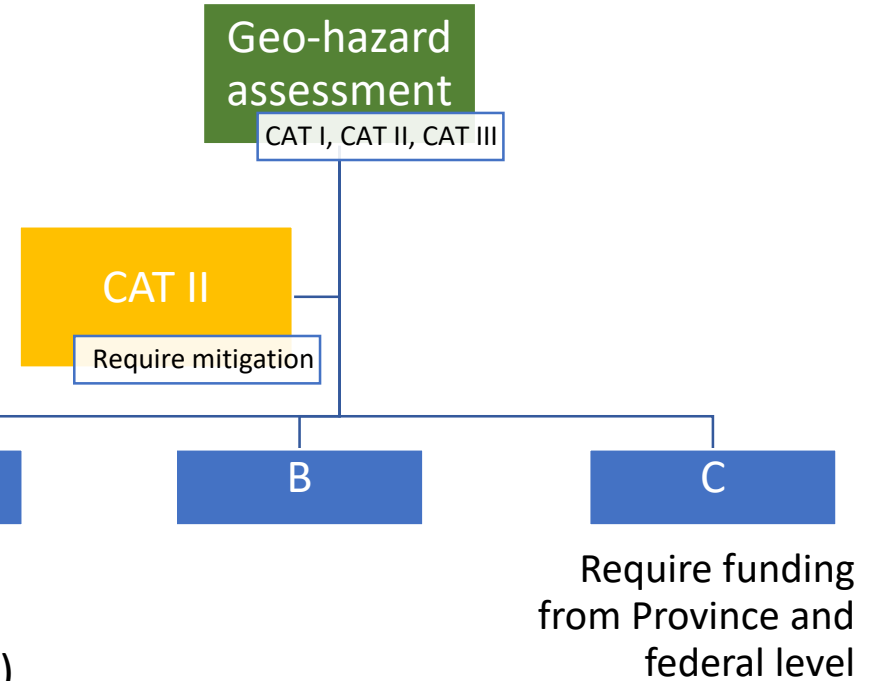
No existing procedure or guideline in place for CAT II mitigation fund

DRR/M efforts have not been well organized and synchronized among relevant ministries

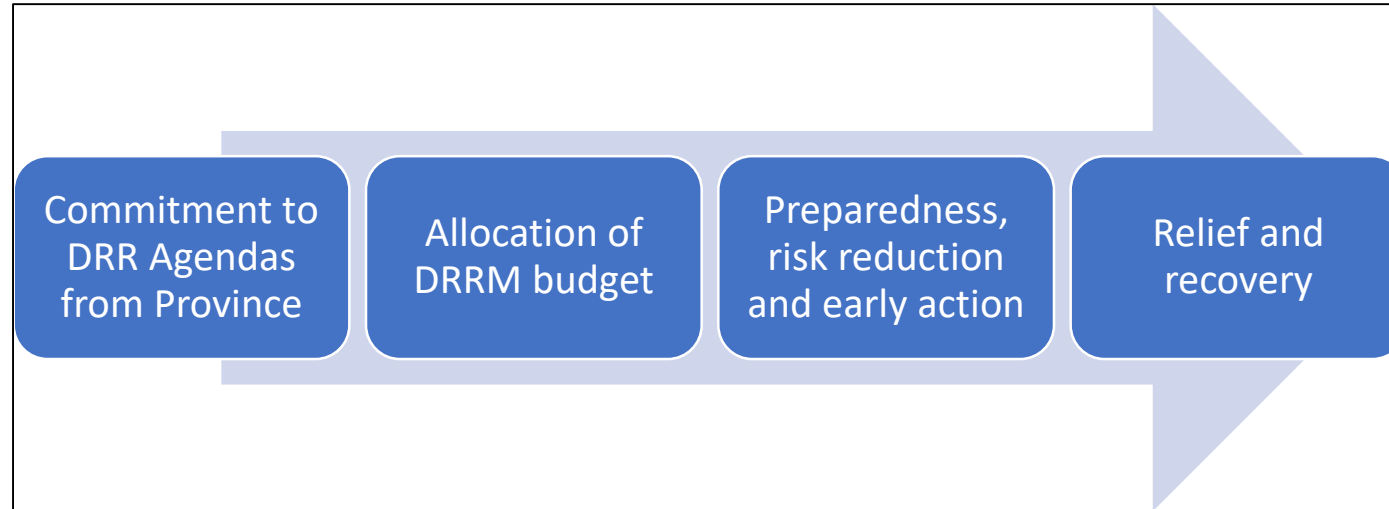
Have sufficient budget but lacks capacity (technical, human resource)

Province Support required for CAT II HHs

- Ministry of Internal Affairs and Law (MoIAL):
DRRM Fund for mitigation work in CAT II sites
- Ministry of Industry, Tourism, Forest and Environment (MoITFE):
Small mitigation activity in CAT II sites
- Ministry of Drinking Water, Energy and Irrigation (MoDWEI)-
Budget for disaster mitigation caused by water, irrigation, energy projects
- Department of Forest and Soil Conservation (DoFSC) **A**
- Ministry of Parliament Development Fund
- Ministry of Federal Affairs and General Administration (MoFAGA)

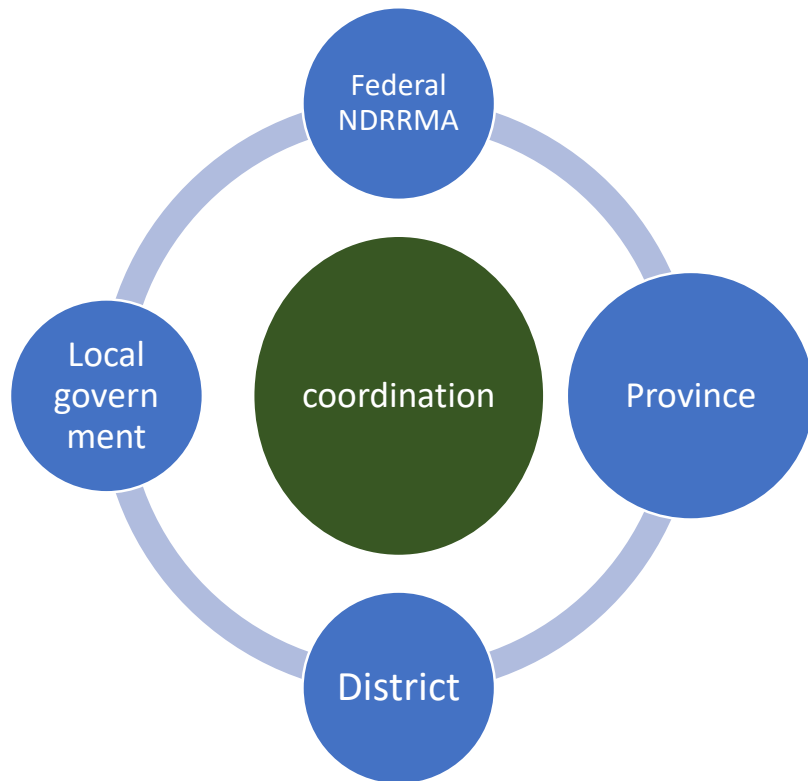


Other Support



- Sufficient allocation of grant by Province for Landslide mitigation

Where will we support



Support to find the funds for CAT II mitigation



- Technical support
- Strengthening capacity of the Local Government

Our Commitment in Pratibaddha 2

- Follow-up mapping & gaps analysis
- Development of landslide and flood risk maps
- Sub-categorization of CAT II households
- Awareness raising on CAT II mitigation measures and basic emergency preparedness trainings
- Continue facilitation for relocation of CAT III households
- Conduct Workshops at all the level for the capacity building

At our end:

- Follow up on the spending of the provincial funds allocated for CAT III
- Continue unlocking of any available resources for CAT II mitigations.

Rural Road Construction - Problem Identification



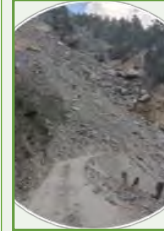
Haphazard road construction contributed to more than **60%** of Landslides in hilly areas



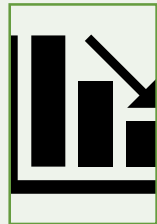
Expansion of rural road network remains one of the top priorities for local leaders and communities



More than **50%** of the municipality budget is allocated for roads



Lots of road projects, each with minimum budget resulting poor quality



Roads constructed without following any technical guidelines; not even minimum standards met



Lack of strong leadership and technical capacity

Ministry of Physical Infrastructure and Development (MoPID)

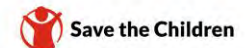
Gaps and
Limitations:

MoPID has some budget but lacks clarity for spending it in disaster mitigation caused by road construction

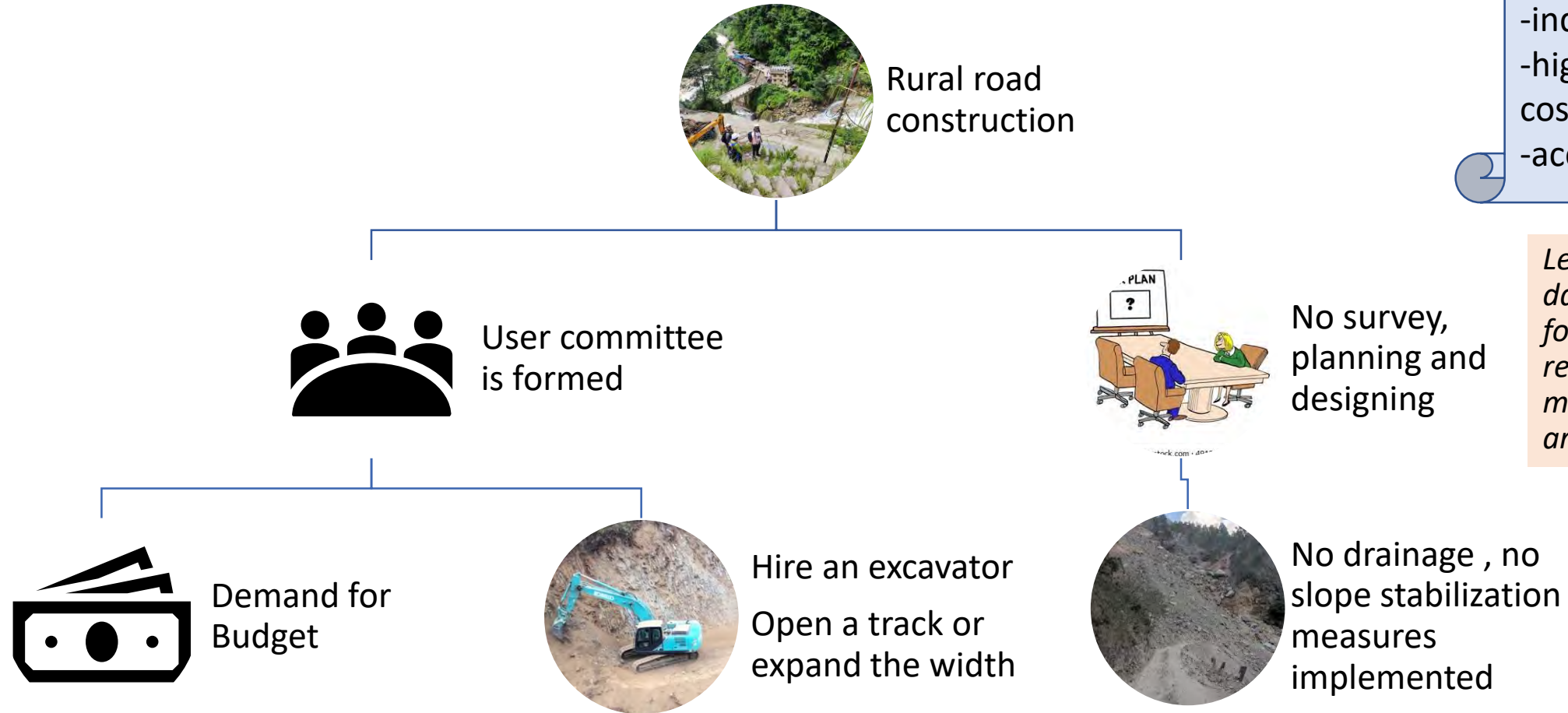
not fully aware about the causes and consequences of road construction causing landslide

Doesn't have full robust monitoring and quality check system

- **Focal ministry for physical infrastructure** (including road development)
- Ministry have quality control guidelines and the provincial public road act.
- Road Maintenance Responsibility
 - Contractor for certain period
 - Ministry for rest of the period



Current Practices



Problems
-road damaged every monsoon
-induce landslides
-high maintenance cost
-accidents

Lead to enormous damage to soil, forest, water resources and causes many landslides around".

Our effort in Pratibaddha I



Success Story

“Being a resident of one of most affected communities by landslides and a technical person by profession, I did not have a chance to learn how landslides occur and how they can be mitigated locally reducing the risk to the community and making local infrastructures disaster friendly in my 22 years of career in this sector,”-Badel Lama, Sub Engineer



Through his continuous advocacy, the municipality agreed to allocate one lakh rupees for bio-engineering works which is itself a first initiative in RM. There is a plan to construct protection walls and drainage in the whole section which is being upgraded

Evidence based Good practices on nature based solution

Nature-based solution: bio-engineering, agri-forestry, bio-diversity practice etc, building drainage, slop stabilization etc)



Pond in Betali VDC, Ramechhap to collect excess storm water to reduce soil erosion and to use for agricultural purpose under USAID_Sajhedari_Bikaash_Project



Bio engineering added in a road p
Food for work project

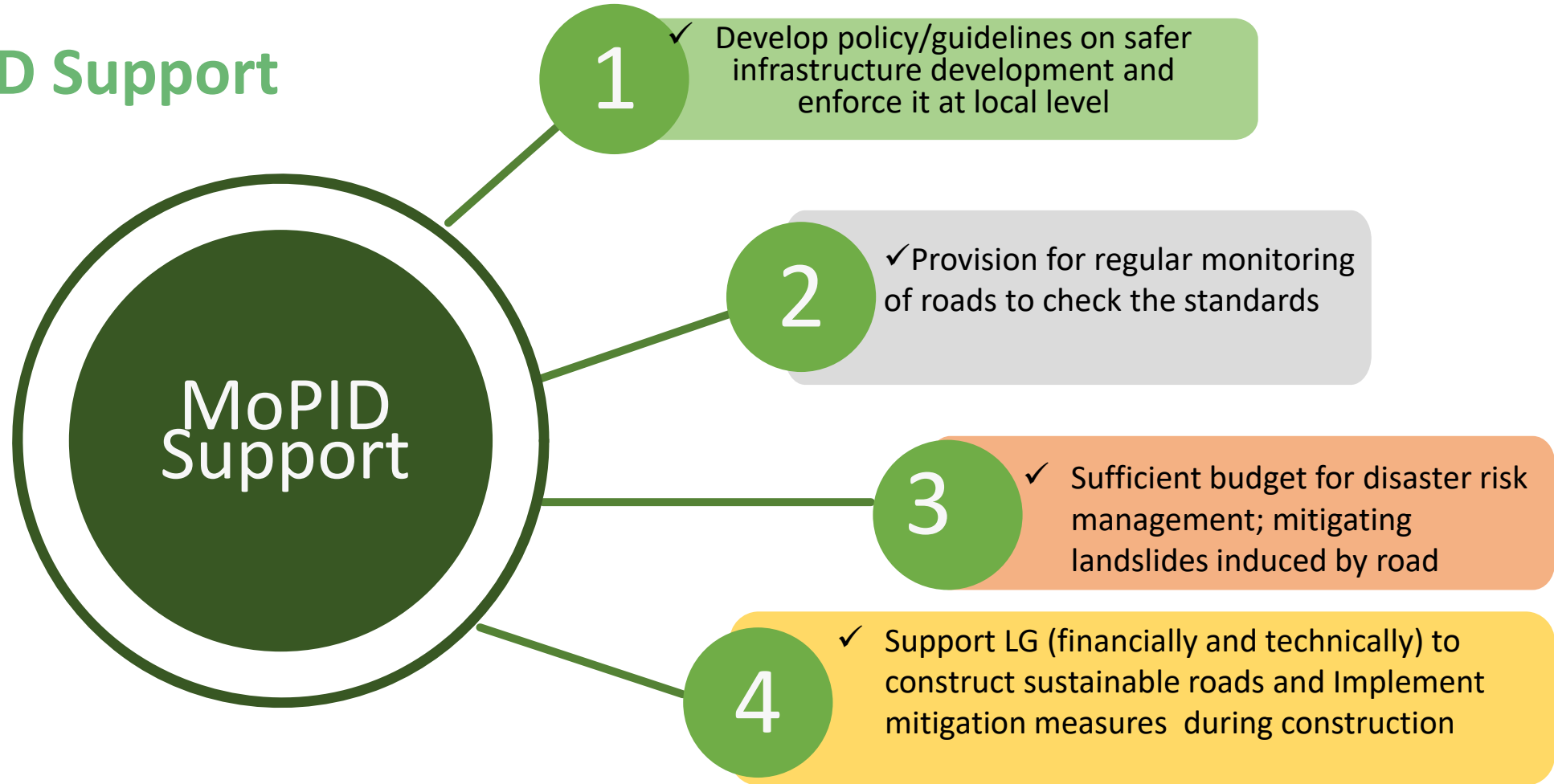


Low cost drains constructed under Unnat Goreto along the trails



Bio-engineering in to mitigate the landslide –Unnat Goreto project

MoPID Support



Our Commitment for Sustainable roads

- Facilitate implementation of Rural Road Construction Guideline (RRCG) and climate smart approaches for road construction in at risk communities
- Raising awareness on road construction and agricultural practices as a factor of landslide.
- Advocacy to strengthen implementation of landslide disaster preparedness and mitigation

- Follow up for mitigation projects to be included in this annual planning and budgeting
- Follow up for MoPID road maintenance budget -make sure that the budget is spent well in road maintenance and mitigation activities

Government area of priorities

Strengthening the disaster risk management system at the federal, provincial and local levels

- ✓ Organize meetings to facilitate coordination between partner agencies/ organizations.
- ✓ Conduct trainings for the localization of BIPAD Portal
- ✓ Develop record management system. (Library, Website, Bipad portal, MDSA etc.)

Better multi-hazard early warning system

- ✓ Conduct programs related to multi hazard early warning system and decision support system.

Strengthening disaster preparedness for effective response

- ✓ Conduct disaster-related simulation exercise for persons with disabilities.

Risk Maps

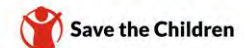
The data from geo-hazard assessment and P3DM model will be combined with the VCA analysis for risk mapping.

Seek to coordinate with DU to prepare P3DM model for Rasuwa

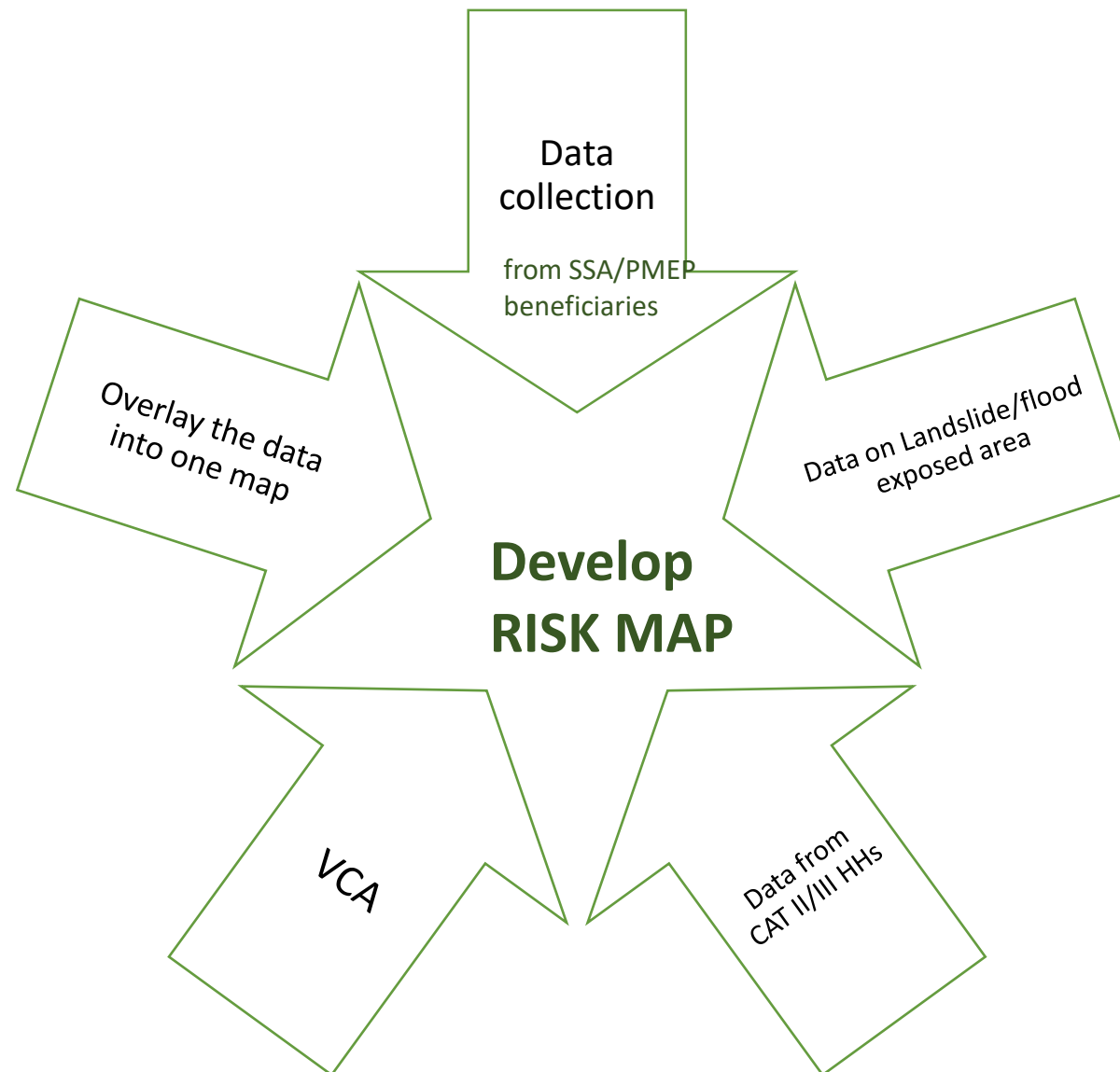
Use the updated P3DM model (by DU/NSET) for local planning of Bhotekoshi. (P3DM as innovate tool helped in discussing hazards, vulnerability and risk information in an interactive and illustrative manner.

Work to Align the VCA with the annual municipality profile update carried out by Participatory Rural Appraisal (PRA) methodology.

Support the municipalities in better understanding of landslide and flood risk in their geographical area through the development of risk maps.

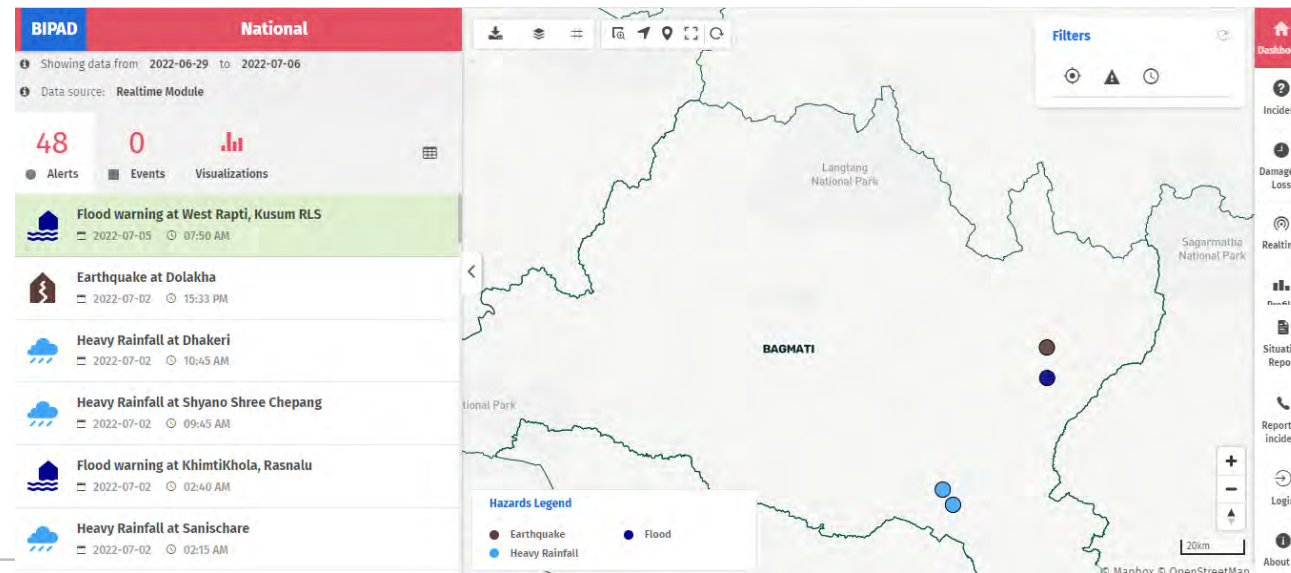


Risk Maps



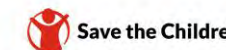
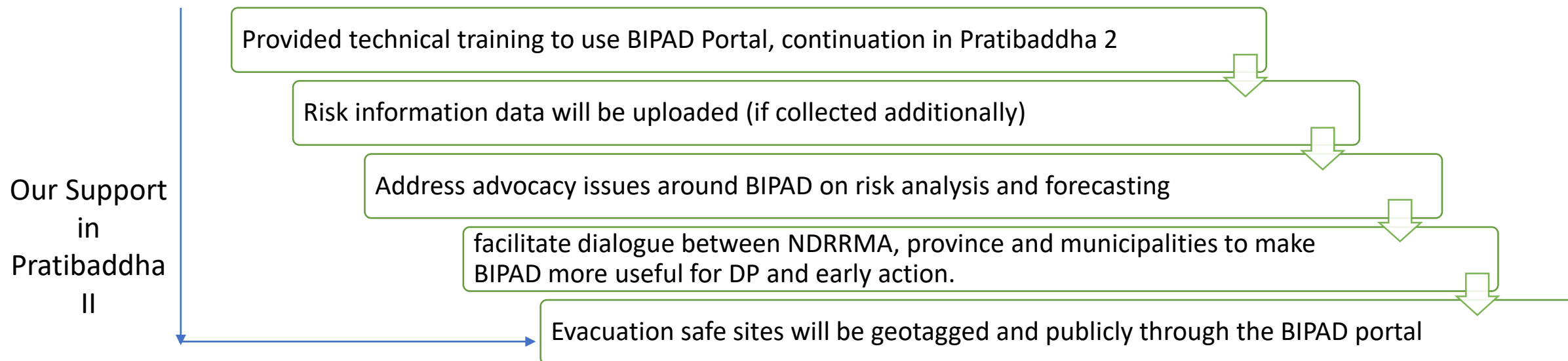
BIPAD PORTAL- at Province

- Province is only the user of BIPAD portal,
- It has not been given the authorization to add more information from their end.
- The sensitization use of the BIPAD portal is also found to be less at the provincial level.



BIPAD PORTAL

- Contains many data useful for better local planning; Identifies past and present shocks that have and can affect the targeted communities.
- Research shows, only 12% of municipalities in the areas most exposed to landslides and other hazards in Bagmati province uses this tool



Landslide forecasting and early warning system

Research of DU and NU shows that 80% of **'forecasted' landslides were expected** in advance based on DU susceptibility maps.

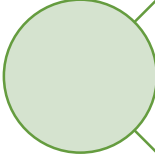
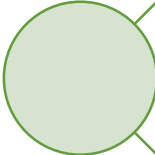
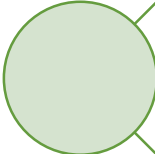
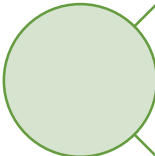
Early warning messages dissemination **lacks a clear mechanism.**

Radio and **use of cost-effective social media/network programming** are more effective for risks communication and increasing awareness against landslide hazards.

Mechanism at the Palika level whereby DHM forecasts are regularly collected and **disseminated to the end users** is necessary

Good practices on **landslide forecasting models** will be discussed and shared -Carry out research

Our Commitment in Pratibaddha in EWS and FbA

-  Landslide forecasting and EWS improvements in at-risk communities
-  Capacity building of 4 municipalities in Forecast based Action (FbA)
-  Support minimal functionality of EOCs, support to develop FbA protocols
-  Simulation exercise to test and evaluate functions of an emergency plan in the most realistic manner

SRSP

- Shock-responsive social protection (SRSP) focuses on shocks that affect a large proportion of the population concurrently.
- The LGDAACA assessment undertaken by PIN in January 2022 shows that no municipality in the Action's selected target areas has experience with SRSP.
- To strengthen people's resilience, the social protection system needs to be shock responsive.
- It is important to raise awareness on SRSP because the effective business continuity of SP programs depends on strong buy-in and SRSP knowledge of local stakeholders.

SRSP Gaps and way forward

- The existing public policy regime does not incorporate shock responsiveness in the design or implementation of social protection.
- The social protection programs are at risk of disruption in the event of certain shocks including natural hazard induced disasters.
- Clarity on roles and responsibilities between three tiers of government on design, implementation and monitoring of social protection programs is missing

It is recommended to Strengthen the institutional capacity of local governments to improve social registry and data infrastructure so that shock responsive social protection programs result in well-organized service delivery with effective monitoring and reporting practice.

SRSP cases

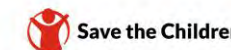
Response to shocks ends up being ad-hoc, inadequate and without a connection to the existing social protection programmes; a major missed opportunity in most cases

Case story of Kailali District

- DRC transferred multi-purpose cash (MPC) by leveraging the Social Security Allowance (SSA) program. A sum of NPR 13,500 was provided to 270 families to meet their basic needs and support early recovery after the devastating unseasonal flood in Kailali District.
- This ECHO funded project, utilized the Nepalese social protection system to act in anticipation of a disaster and to immediately address its impacts since early 2020.
- Encouraged the use of an already existing government regulated bank account, eliminating the need to create new accounts to provide flow cash assistance to flood-affected households in a timely and cost-efficient manner.

Social protection schemes by the government - super cereal distributions targeting *Dalit*, poor, marginalized and vulnerable families and their children across the country.

SC is supporting the this initiative through a number of measures-following a cash plus approach such as integrating parenting sessions for the care givers of child grant-recipients in order to contribute to better health and nutrition outcome of the children, and for their overall wellbeing.



Our Commitment in Pratibaddha II in SRSP

- SRSP capacity building and orientations on the potential of SRSP for local authorities
- Study on System Disruptions for SSA and PMEP
- Assisting municipalities in strengthening understanding on how to best use SSA and PMEP in case of crisis
- Simulation (both desktop and in field) and development of design tweaks
- Evidence-based advocacy on SRSP at local, provincial, and federal level including continuation of the national dialogue platform on SRSP

Our further effort

- Organize series of exposure visits with the focal person of concern ministries to show the situation of landslides, CAT II and CAT III households
- Sensitize the urgency of mitigation/relocation and leveraging additional budget from province government.
- Regular communication, coordination and follow up with province government to bring it in action
- Province has developed a Monsoon Preparedness Plan last year (2021). However, for this year the revision has not been started yet. Advocate for it.

Learnings from Past Projects

Coordination

Strong coordination/communication with and among the national and local stakeholders is needed for any project to be effective and efficient.

Cost effective activities

IEC materials and L-DEM workshops brought certain advantages with it, but proved to be expensive, cost-effective measures can be adopted like radio/ social media

Exposure Visits

Exposure visits and regular meeting with key stakeholder is more effective to find out the bottleneck and its solution as the problems faced are often diverse and their voices remain localized.

Disaster Resilient Road

, need to allocate sufficient budget; need support to leverage funding; training on bio-engineering and low-cost technology for landslide mitigation measures

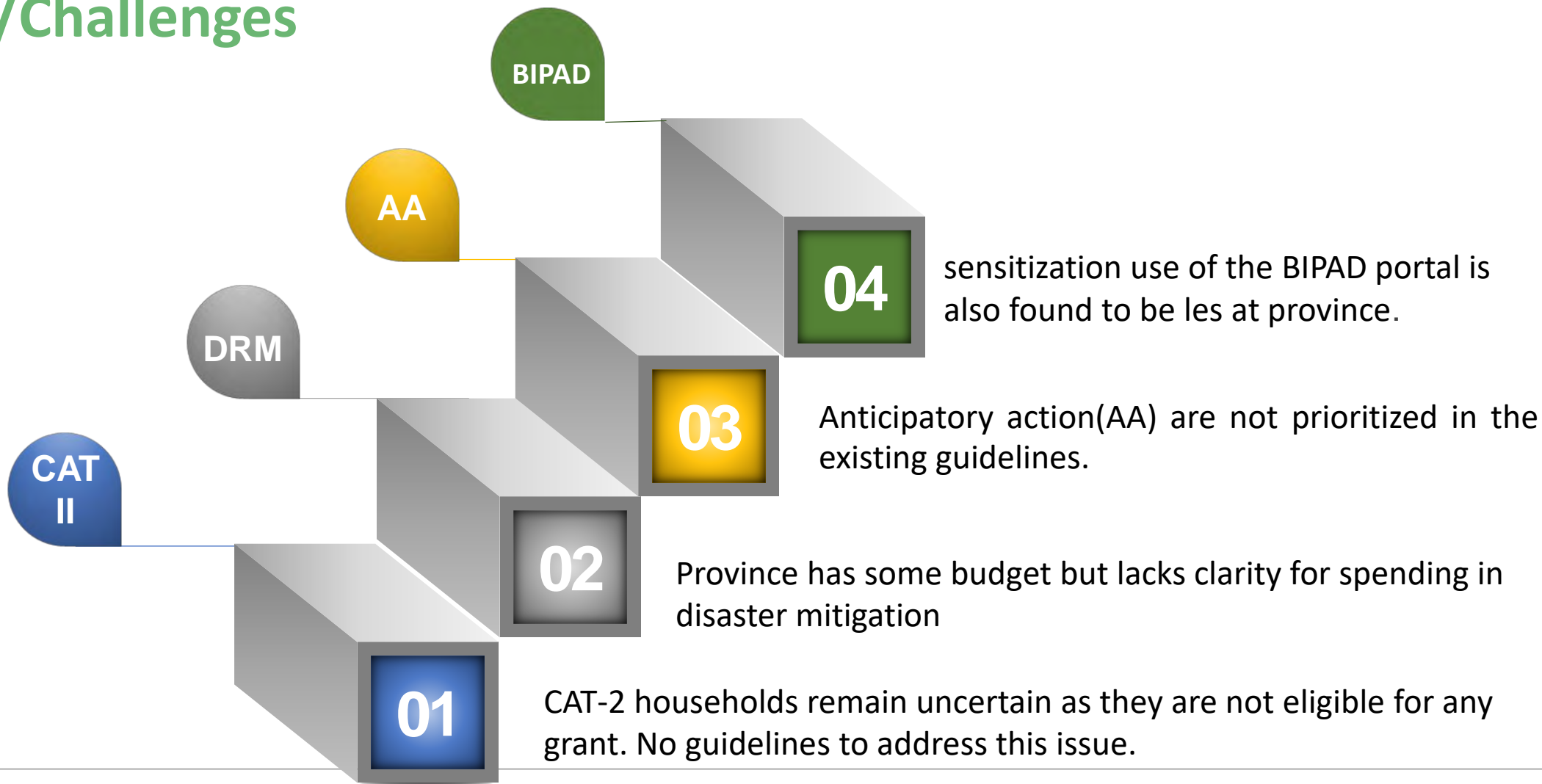
BIPAD Portal

dialogue among all tiers of government is required to make BIPAD more user friendly for disaster preparedness and early action.

Ownership

Ownership by the governmental authorities is the essential for the sustainability of any activities

Gaps/Challenges



More gaps

STAKEHOLDERS COORDINATION

Lack of common platform and interest from province and federal level stakeholders sit together to discuss on agendas pertaining to landslide management



05

EOC Set-up

The guideline, financial resource and HR structure is missing at the local level to set up an EOC



06

PRIVATE SECTOR INVOLVEMENT

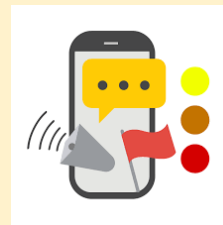
Lack of involvement of private sector in disaster management



07

EARLY WARNING MESSESEGES

Early warning messages lacks a clear mechanism



08

DISBURSEMENT OF FUNDS

Late disbursement of funds between the three governmental tiers is the hindrance for the implementation of effective disaster preparedness and anticipatory action



09

SRSP

SRSP are not prioritized in the existing guidelines



10

Thank you

for your attention!



Funded by
European Union
Humanitarian Aid



Save the Children